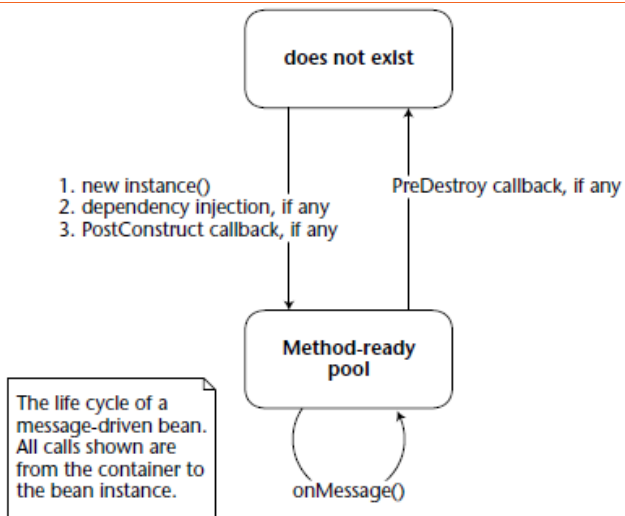


MDB Lifecycle



Message Driven Bean

Transaction and Security

- No Security Context
- No Caller
- Available Transaction is Required or NotSupported

Implementation

- JCA compatible
- configuration over `activationConfigProperties`
- `@MessageDriven`
(`activationConfigProperty=@ActivationConfigProperty(propertyName="destinationType", "propertyValue="javax.jms.Queue")`)
- MDB implements `javax.jms.MessageListener`
- It is impossible to define a MDB with a super-class which is again a MDB

Acknowledge Mode

- only on BMT or NotSupported
- auto: acknowledge soon after MDB is processing message
- dups-ok: some when later will also be fine (could result in duplicate messages, because sender thinks, message was not sent correctly)

MessageSelector

- `@ActivationConfigProperty(propertyName="messageSelector", propertyValue="name = 'Stefan')`

JMS Topic

- 1 to many
- Publish-and-Subscribe
- Message is delivered to all consumers (broadcast)

JMS Queue

- Point to Point
- Pull- or polling-based model (not defined in the specification)